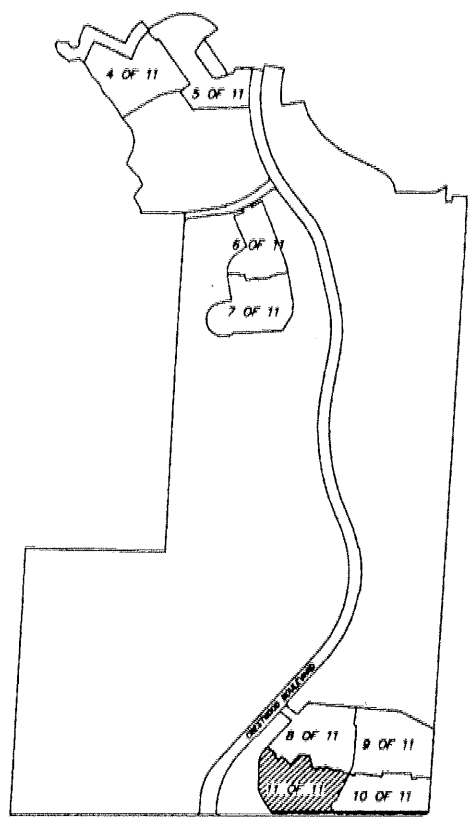
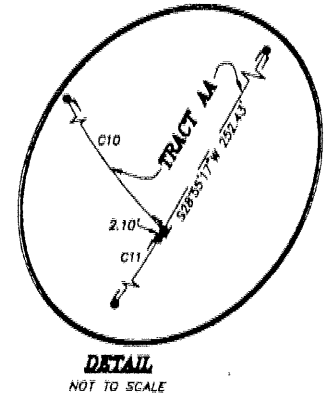
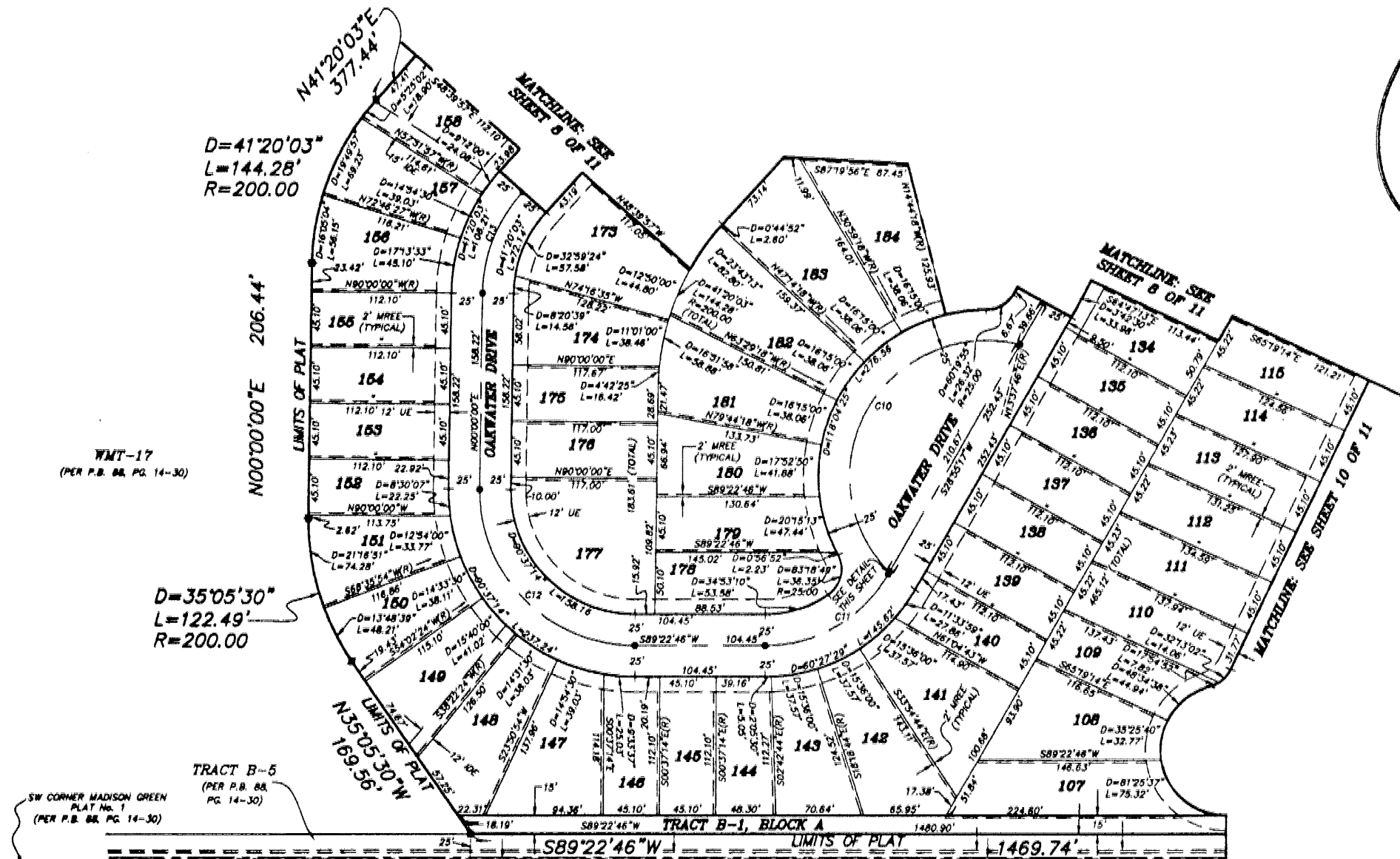
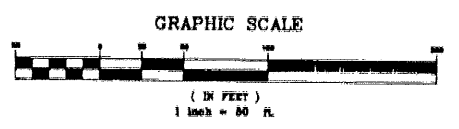


MADISON GREEN-PLAT No. 1, PARCEL "A", PARCEL "H" AND PARCEL "K", REPLAT  
 BEING A REPLAT OF ALL OF PARCEL "A", PARCEL "H" AND PARCEL "K", AS SHOWN ON MADISON GREEN -  
 PLAT No. 1, AS RECORDED IN PLAT BOOK 88, PAGES 14 THROUGH 30 OF THE  
 PUBLIC RECORDS OF PALM BEACH COUNTY FLORIDA, IN SECTIONS 16 AND 22, TOWNSHIP 43 SOUTH,  
 RANGE 41 EAST VILLAGE OF ROYAL PALM BEACH, PALM BEACH COUNTY, FLORIDA  
 FEBRUARY 2001  
 SHEET 11 OF 11



- LEGEND:**
- D= DELTA (CENTRAL ANGLE)
  - L= LENGTH
  - R= RADIUS
  - CB= CHORD BEARING
  - CD= CHORD DISTANCE
  - PSM= PROFESSIONAL SURVEYOR AND MAPPER
  - PLS= PROFESSIONAL LAND SURVEYOR
  - LAE= LIMITED ACCESS EASEMENT
  - MREE= MAINTENANCE ROOF AND EAVES EASEMENT
  - UE= UTILITY EASEMENT
  - IDE= INTERIOR DRAINAGE EASEMENT
  - CME= CANAL MAINTENANCE EASEMENT
  - WMT= WATER MANAGEMENT TRACT
  - GC= GOLF COURSE
  - ORB= OFFICIAL RECORD BOOK
  - P.B.= PLAT BOOK
  - PG.= PAGE
  - LB= LICENSED BUSINESS
  - (R)= RADIAL
  - PM= PERMANENT REFERENCE MONUMENT
  - PC= PERMANENT CONTROL POINT



12' FORCE MAIN EASEMENT (PER ORB 8606, PG 1079 AND ORB 8550, PG 1483)  
 NOTE: DUE TO ERRORS IN THE FORCE MAIN EASEMENT DESCRIPTION, THE POSITION OF THE EASEMENT HAS BEEN DEPICTED BASED ON RECORD DRAWINGS PREPARED BY ROYAL PALM COLONY PARTNERSHIP, DATED AUGUST 1989, PAGES 3 OF 9 THROUGH 7 OF 9.

CURVE TABLE					
CURVE	DELTA	LENGTH	RADIUS	CHORD BEARING	CHORD DISTANCE
C10	149°24'59"	284.77'	109.20'	S28°55'12"W	210.67'
C11	60°27'26"	118.24'	113.00'	N59°02'02"E	113.76'
C12	90°37'14"	197.70'	125.00'	S42°18'37"E	177.73'
C13	41°20'03"	90.18'	125.00'	S20°40'01"W	88.23'

MADISON GREEN-PLAT No.1, PARCEL "A", PARCEL "H" AND PARCEL "K", REPLAT

**NICK MILLER, INC.**  
 Surveying & Mapping Consultants

SHEET NO. 11  
 SCALE: 1"=50'

DATE: FEB 2000  
 JOB NO. 99043AK  
 FILE: 99043AKS-11

SUITE 105  
 2580 RCA BLVD.  
 PALM BEACH GARDENS, FLORIDA 33410  
 TEL 561 627-5200 FAX 561 627-0983  
 D.B.P. LICENSED BUSINESS No. 4318